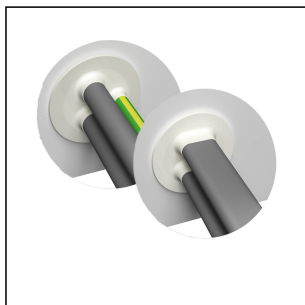


EMT-F Kit 20/25/32 WH

Products may differ in size, colour and appearance to those shown. If you require further information or customisation, please contact us directly.

Temp. range min	-40 °C
Temp. range max	80 °C
Protection class	IP66
Glow wire test	960 °C
WISKA-Order no.	10106226
Type	EMT-F Kit 20/25/32 WH
ETIM-Classification	EC000451

Content:

Flame retardant membrane spout
8x QUIXX EMT-F 20 Quixx 20mm
3x QUIXX EMT-F 25 Quixx 25mm
3x QUIXX EMT-F 32 Quixx 32mm

25.04.2022

Your Contact:**WISKA UK Ltd.**

Unit 7, Hurling Way · St. Columb Major Business Park · TR9 6SX, St. Columb Major, Cornwall · Great Britain

☎ +44-12-08816062 · 📠 +44-12-08816708

info@wiska.co.uk · www.wiska.co.uk